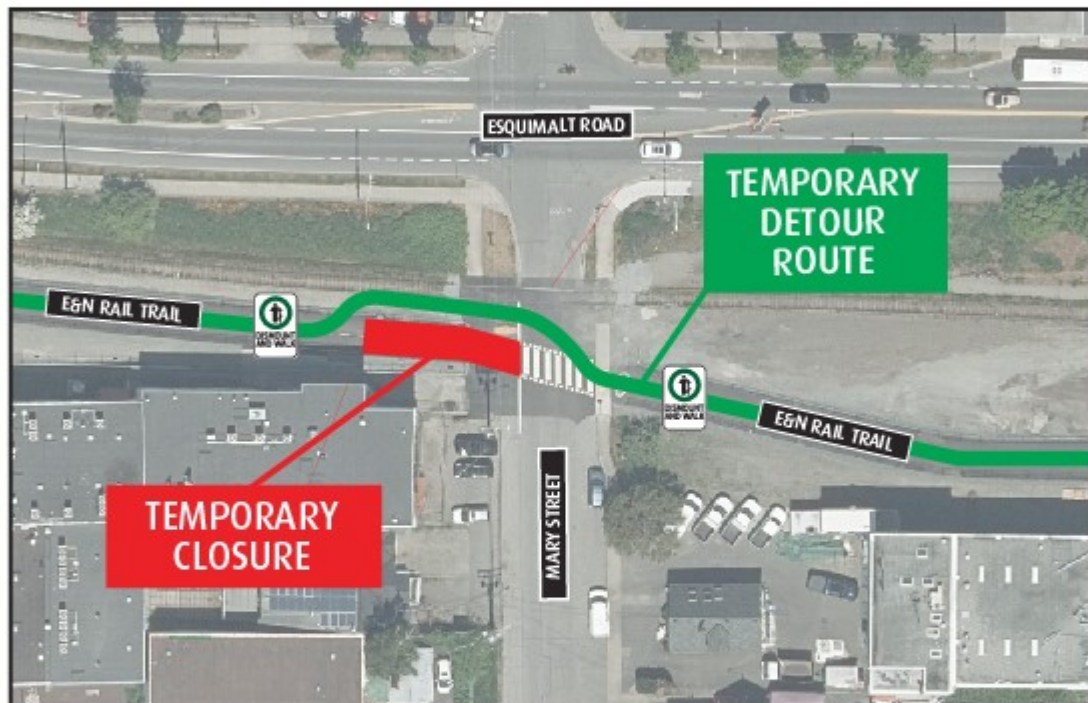


# Asphalt Replacement - E&N Rail Trail



Concrete and asphalt replacement work will be taking place between August 29 and September 6 on the E&N Rail Trail Regional Trail at Mary Street in Victoria. A short detour will be provided adjacent to the trail. Please abide by all signage and the direction of any traffic control personnel on site. Use caution around equipment and crew. Cyclists will be required to dismount in active work area. See map for details.

**Use caution around equipment and crews.**

250.478.3344 | [crdparks@crd.bc.ca](mailto:crdparks@crd.bc.ca) | [crd.bc.ca/parks](http://crd.bc.ca/parks) | [@crd\\_bc](https://x.com/crd_bc)

**CRD**  
Making a difference...together