



Notice of Meeting and Meeting Agenda Performing Arts Facilities Select Committee

Wednesday, September 4, 2024

3:30 PM

6th Floor Boardroom
625 Fisgard St.
Victoria, BC V8W 1R7

M. Alto (Chair), C. McNeil-Smith (Vice Chair), P. Brent, J. Caradonna, S. Goodmanson, K. Murdoch, C. Plant, M. Tait

The Capital Regional District strives to be a place where inclusion is paramount and all people are treated with dignity. We pledge to make our meetings a place where all feel welcome and respected.

1. Territorial Acknowledgement

2. Approval of Agenda

3. Adoption of Minutes

- 3.1. [24-809](#) Minutes of the July 3, 2024 Performing Arts Facilities Select Committee Meeting

Recommendation: That the minutes of the Performing Arts Facilities Select Committee meeting of July 3, 2024 be adopted as circulated.

Attachments: [Minutes - July 3, 2024](#)

4. Chair’s Remarks

5. Presentations/Delegations

The public are welcome to attend CRD Board meetings in-person.

Delegations will have the option to participate electronically. Please complete the online application at www.crd.bc.ca/address no later than 4:30 pm two days before the meeting and staff will respond with details.

Alternatively, you may email your comments on an agenda item to the CRD Board at crdboard@crd.bc.ca.

- 5.1. [24-825](#) Delegation - Gillian Jones; Representing Dance Victoria: Re: Agenda Item 6.1.: Workshop Presentation on Scaling Up Support for Performing Arts Facilities

6. Committee Business

6.1. [24-803](#) Workshop Presentation on Scaling Up Support for Performing Arts Facilities

Recommendation: That staff develop options for sub-regional services that would scale up support for existing performing arts facilities with regional impact.

Attachments: [Staff Report: Workshop Presentation](#)
[Appendix A: Presentation](#)
[Appendix B: Updated List of Facilities](#)
[Appendix C: Updated Cost Estimates](#)

7. Notice(s) of Motion

8. New Business

9. Adjournment

The next meeting is at the call of the Chair.

To ensure quorum, please advise Tamara Pillipow (tpillipow@crd.bc.ca) if you or your alternate cannot attend.

Meeting Minutes

Performing Arts Facilities Select Committee

Wednesday, July 3, 2024

4:00 PM

6th Floor Boardroom
625 Fisgard St.
Victoria, BC V8W 1R7

PRESENT

Directors: M. Alto (Chair), C. McNeil-Smith (Vice Chair), P. Brent, J. Caradonna, S. Goodmanson, K. Murdoch, C. Plant (4:07 pm) (EP), M. Tait (EP)

Staff: K. Morley, General Manager, Corporate Services; C. Gilpin, Manager, Arts & Culture; M. Lagoa, Deputy Corporate Officer; T. Pillipow, Committee Clerk (Recorder)

EP - Electronic Participation

The meeting was called to order at 4:01 pm.

1. Territorial Acknowledgement

Chair Alto provided a Territorial Acknowledgement.

2. Approval of Agenda

**MOVED by Director McNeil-Smith, SECONDED by Director Brent,
That the agenda for the July 3, 2024 Performing Arts Facilities Select Committee
meeting be approved.**

CARRIED

3. Chair's Remarks

Chair Alto noted that the purpose of this committee is not to redo work, but to ask what new work needs to be completed in order to make a recommendation to the CRD Board.

4. Presentations/Delegations

There were no presentations or delegations.

5. Committee Business

5.1. [24-643](#) PAFSC Terms of Reference and CRD Arts Functions

G. Gilpin presented Item 5.1. for information.

Director Plant joined the meeting electronically at 4:07 pm.

Roundtable discussion ensued regarding the goals of this committee. Some items for further consideration were:

- holding a workshop-type meeting
- consideration of a sub-regional or regional service
- a phased entrance to such a service
- the scope and function of the potential previous service
- the alternative approval process

**MOVED by Director Brent, SECONDED by Director McNeil-Smith,
That staff be requested to make a presentation, in workshop format, that will consider performing arts facilities service scope and function based on the 2021 model, including options for a sub-regional service, approval processes, and updated list of facilities.**

**MOVED by Director Brent, SECONDED by Director Goodmanson,
That this motion be deferred to after Item 5.2. Initiatives Supporting Performing Arts Facilities by Current Board and Past Performing Arts Facilities Select Committee, is presented for information.**

CARRIED

5.2. [24-644](#) Initiatives Supporting Performing Arts Facilities by Current Board and Past Performing Arts Facilities Select Committee

C. Gilpin presented Item 5.2. for information.

**MOVED by Director Brent, SECONDED by Director McNeil-Smith,
That staff be requested to make a presentation, in workshop format, that will consider performing arts facilities service scope and function based on the 2021 model, including options for a sub-regional service, approval processes, and updated list of facilities.**

CARRIED

6. Notice(s) of Motion

There were no notice(s) of motion.

7. New Business

Chair Alto asked committee members if they would like to hear presentations from other organizations.

Chair Alto also confirmed the next meeting of the Performing Arts Facilities Select Committee will be held on September 4, 2024. Staff will confirm the time in advance.

8. Adjournment

MOVED by Director Brent, **SECONDED** by Director McNeil-Smith,
That the July 3, 2024 Performing Arts Facilities Select Committee meeting be
adjourned at 5:11 pm.
CARRIED

CHAIR

RECORDER



Making a difference...together

REPORT TO PERFORMING ARTS FACILITIES SELECT COMMITTEE MEETING OF WEDNESDAY, SEPTEMBER 4, 2024

SUBJECT **Workshop Presentation on Scaling Up Support for Performing Arts Facilities**

ISSUE SUMMARY

To review the information requested by the Performing Arts Facilities Select Committee in relation to scaling up support for performing arts facilities and consider next steps.

BACKGROUND

On July 3rd, 2024, the Performing Arts Facilities Select Committee (PAFSC) passed a motion:

That staff be requested to make a presentation, in workshop format, that will consider performing arts facilities service scope and function based on the 2021 model, including options for a sub-regional service, approval processes, and updated list of facilities.

This report provides the information requested through a workshop-style presentation (Appendix A), including updates, situation analysis, models for full regional and sub-regional services, and next steps for the policy process. This presentation includes summarized information on an updated list of facilities (full details in Appendix B) as well as updated cost estimates on the 2021 model of a full regional performing arts facilities service (full details in Appendix C).

ALTERNATIVES

Alternative 1

That staff develop options for sub-regional services that would scale up support for existing performing arts facilities with regional impact.

Alternative 2

That this report be referred back to staff for additional information.

IMPLICATIONS

Alignment with Board and Corporate Priorities

In the current CRD Corporate Plan (2023-2026), initiative 10b-2 states the CRD will “Scale up regional support for performing arts facilities within the region.”

Legislative Implications

To expand the number of participants in an existing sub-regional service, such as the Royal Theatre Service or the McPherson Playhouse Service, the approval process is council consent where at least two-thirds of existing participants must provide consent for the amending bylaw to be approved.

During the deliberations concerning a new full regional Performing Arts Facilities Service, approval processes were a key consideration and major topic of discussion. The establishment of a full regional service must proceed through one of three approval processes. (see Table 1)

Table 1. Overview of Approval Processes for a New Full Regional Service

Approval Method	Cost	Staffing	Threshold to Advance
Council Consent + AAP in Electoral Areas	Low	Medium	Unanimous (and not opposed by AAP)
Full Regional AAP	Medium	High	Fewer than 10% of electors opposed
Full Regional Referendum	Very High	Very High	More than 50% of respondents in favour

Each of these approval processes for a new full regional service were examined in depth by the previous CRD Board and none of them were found to be feasible at that time.

CONCLUSION

The Performing Arts Facilities Select Committee continues to examine the issue of performing arts facilities in the capital region and how best they can be supported in alignment with the current CRD strategic plan. Through a workshop presentation, the Select Committee reviewed an updated list of performing arts facilities, situational analysis, and various models for regional and sub-regional services.

RECOMMENDATION

That staff develop options for sub-regional services that would scale up support for existing performing arts facilities with regional impact.

Submitted by:	Chris Gilpin, MPA, Manager, Arts and Culture
Concurrence:	Nelson Chan, MBA, FCPA, FCMA, Chief Financial Officer
Concurrence:	Kristen Morley, J.D., General Manager, Corporate Services & Corporate Officer
Concurrence:	Ted Robbins, B. Sc., C. Tech., Chief Administrative Officer

ATTACHMENT

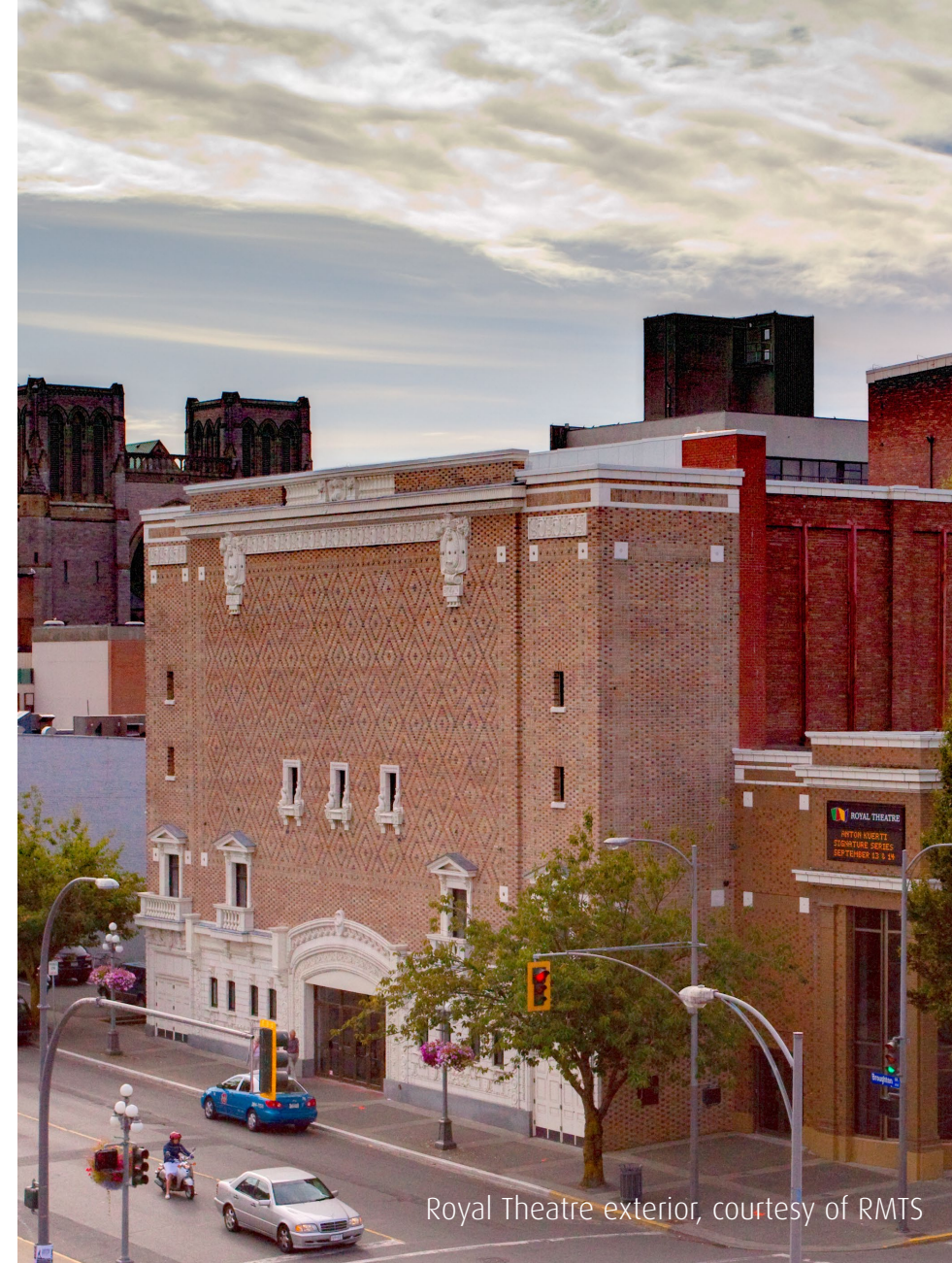
- Appendix A: PowerPoint presentation on performing arts facilities
- Appendix B: Updated list of performing arts facilities in the capital region
- Appendix C: Updated cost estimates by jurisdiction for the 2021 model of a full regional performing arts facilities service

Performing Arts Facilities in the Capital Region

2024 | WORKSHOP PRESENTATION

Agenda

- › Situational analysis
- › Jurisdictional Scan
- › Models and Case Studies
- › Next steps



Royal Theatre exterior, courtesy of RMTS



VITAL SIGNS
CITIZEN SURVEY GRADE

B

ARTS & CULTURE

BUILDING CAPACITY AND INVITING DIVERSITY

With over 35,000 ships' plans, 2,000 maps and charts, and a 40,000+ object collection and archive, it's obvious that the Maritime Museum of British Columbia is a key knowledge holder about history on the water. When the Victoria Foundation offered funds through the Community Grants Program, the Museum developed a three-part strategy to set its course. The first component was to develop a three-year strategic plan, revising their value statements and strategic priorities. The second was to continue efforts to make their services accessible to everyone in the community. And the final piece focused on building capacity and identifying ways to obtain a larger space to enable a stronger community impact.

Brittany Vis, Executive Director, shared, "We used some of the funds to help us offer honoraria to external folks presenting in our programs and events, like our Nautical Nights Speaker Series & Maritime Masterclasses. Providing an honoraria helps us bring in more diverse groups of people interested in learning the hidden secrets within the Museum's collections."

Photo by Maritime Museum of BC



Arts & Culture Earns a "B"

- › The Victoria Foundation's Vital Signs is an annual community check-up measuring the region's vitality
- › The Vital Signs citizen survey gave Arts & Culture a "B" grade in 2023, the **highest awarded** that year

The Arts Ecosystem



small shows require
small venues

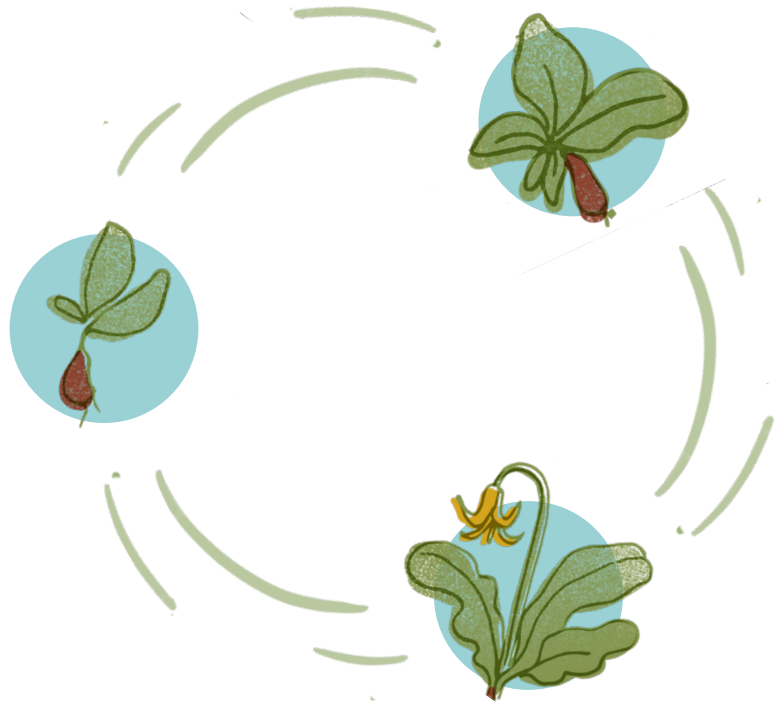


medium shows require
medium venues



large shows require
large venues

The Arts Ecosystem



No single venue can meet **all** needs.

The arts ecosystem flourishes when there is a broad variety of sizes & types.

Performing Arts Facilities: Types & Functions

FACILITY TYPE	TECHNICAL SUPPORT	PROFESSIONAL FUNCTIONALITY	ARTS SUPPORTED	BIG SPECTACLE SHOWS
Banquet Hall	Very Limited	Low	Music, Dance, Theatre	No
Church	Very Limited	Moderate	Music	No
Gymnasium	Very Limited	No	Music, Dance, Theatre	No
Nightclub	Limited	Moderate	Music, Dance	No
Auditorium	Limited	Low	Music, Dance	No
Recital Hall	Moderate	High	Music	No
Arena / Outdoor	Moderate	Moderate	Music, Dance	Yes
Black Box Theatre	Extensive	High	Music, Dance, Theatre	No
Soft Seat Theatre	Extensive	High	Music, Dance, Theatre	Yes

What is a Performing Arts Facility with Regional Impact?

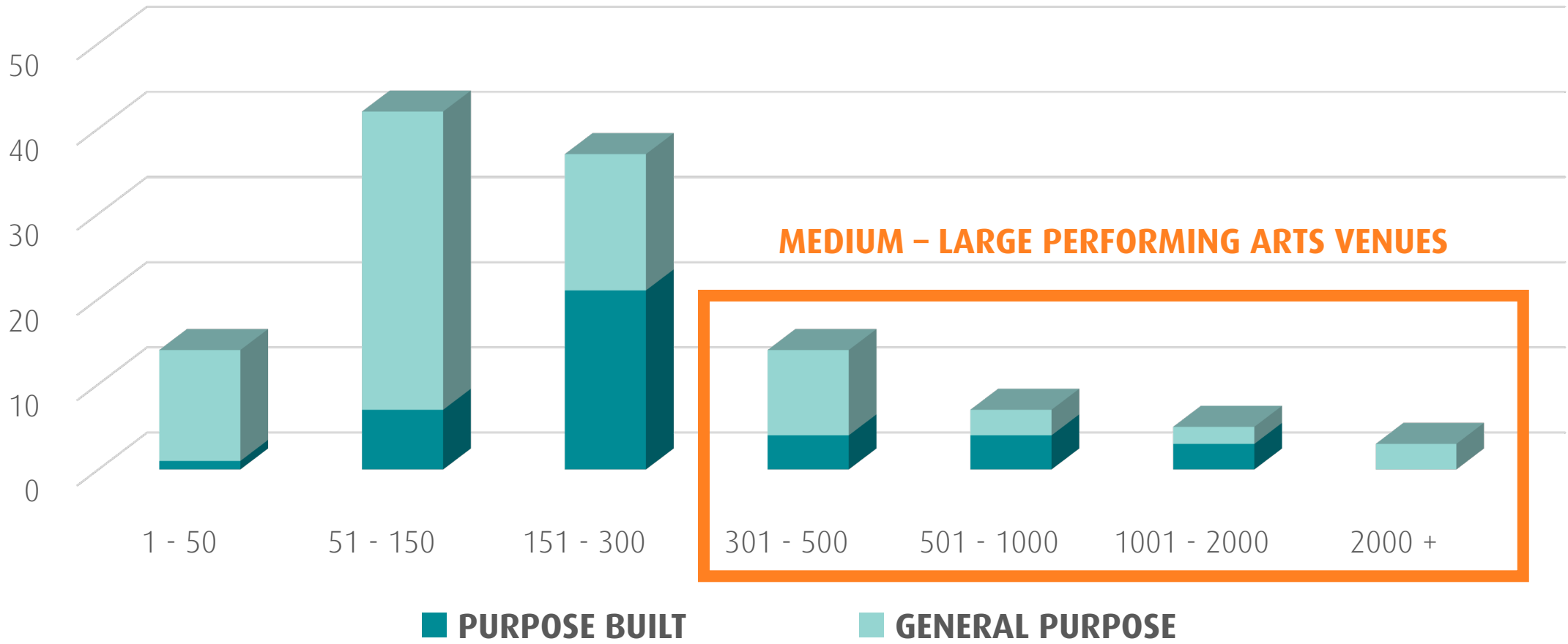
DEFINITION FROM BYLAW NO. 4445

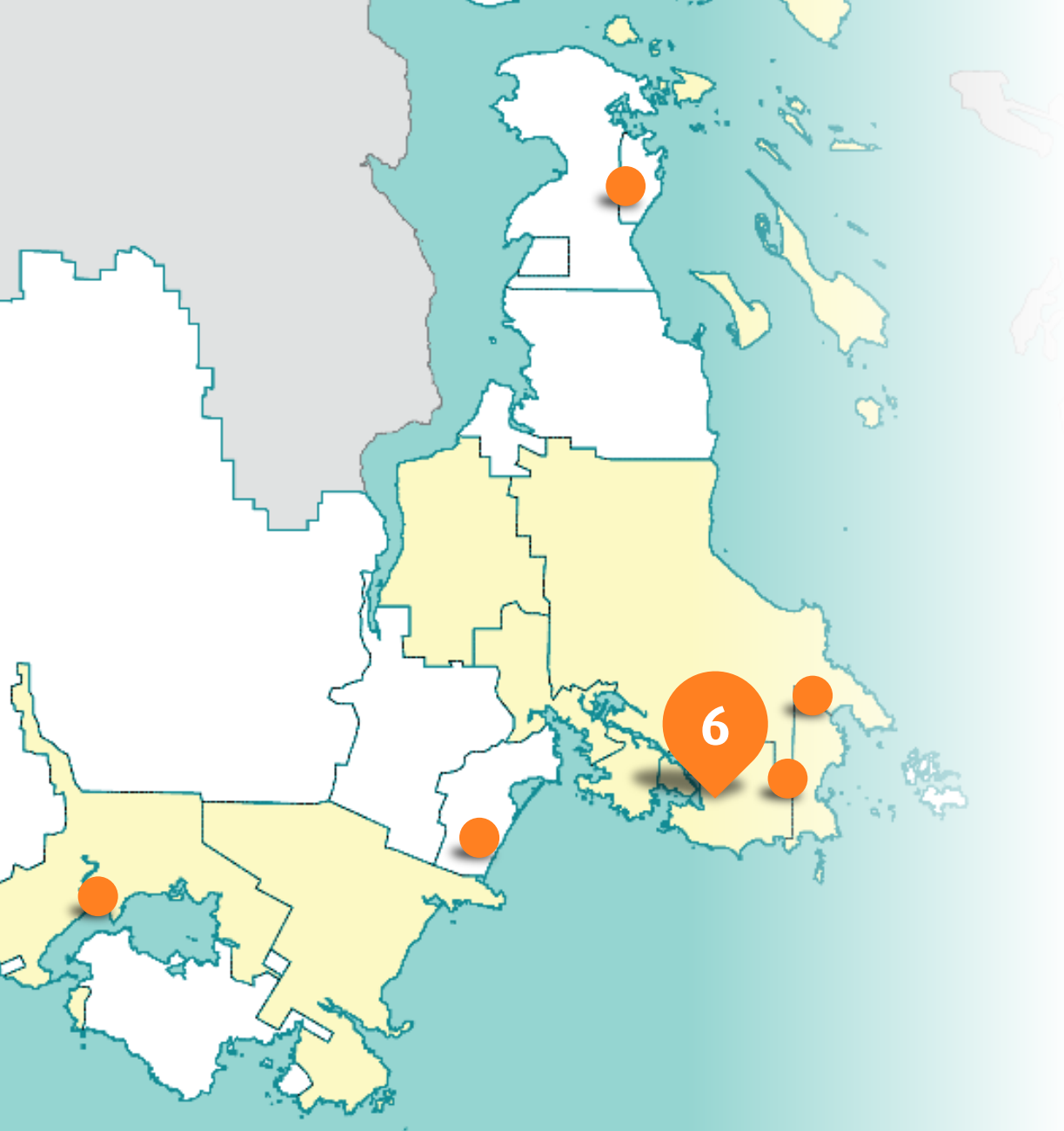
- › Purpose-built as a performing arts facility
- › Designed to support wide-range of user groups (dance, music, theatre, etc.)
- › Available to rent, not pre-booked by resident company
- › Draws significant portion of audience from beyond local jurisdiction (>50%)
- › Not embedded in educational, religious, or for-profit org
- › Also referred to as “Regional Theatres”



McPherson Playhouse
exterior, courtesy of RMTS

Capital Region Venues By Seating Capacity

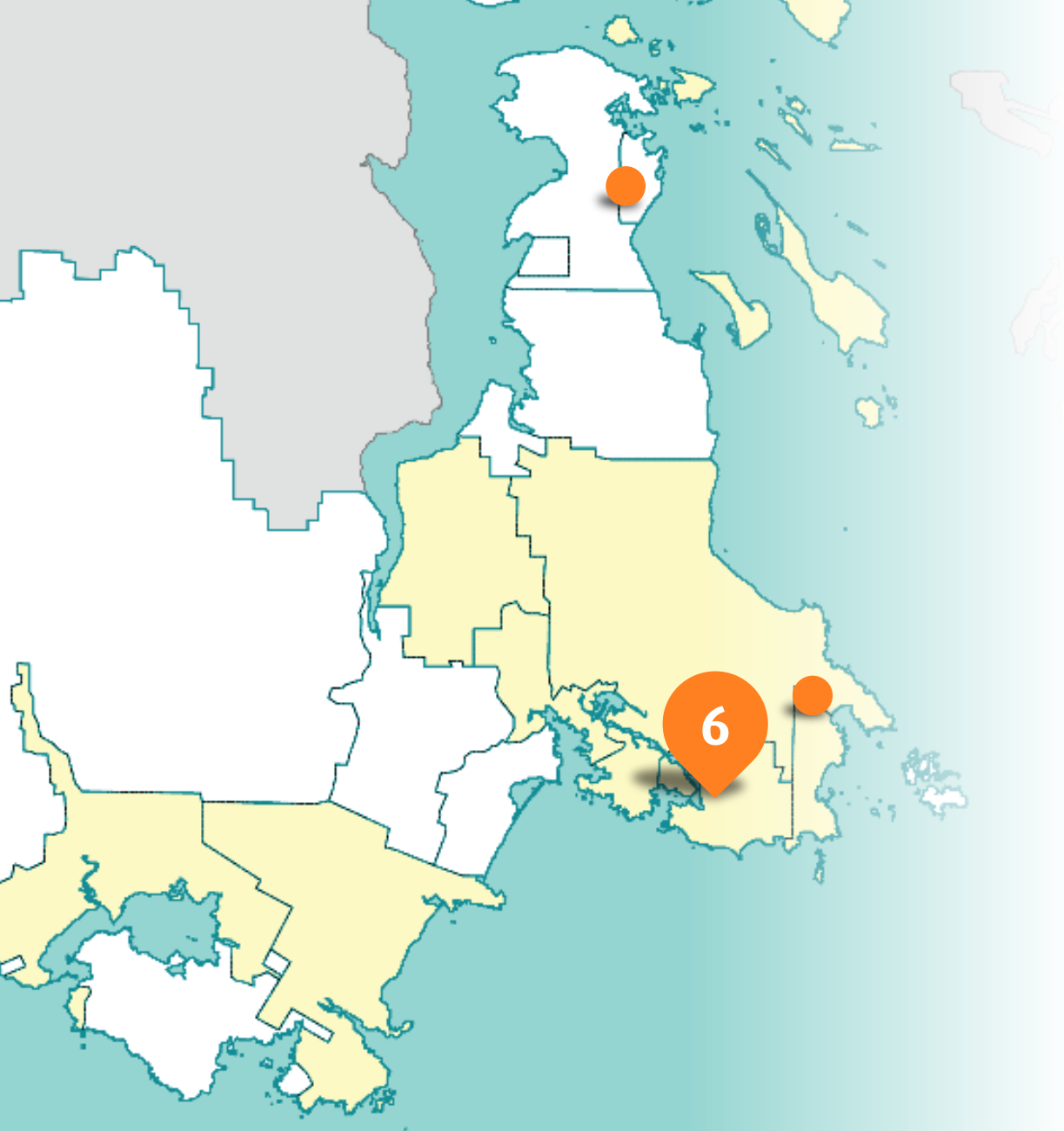




Medium – Large Performing Arts Venues

- ✓ Seats >300
 - ✓ Primary purpose is performing arts
-

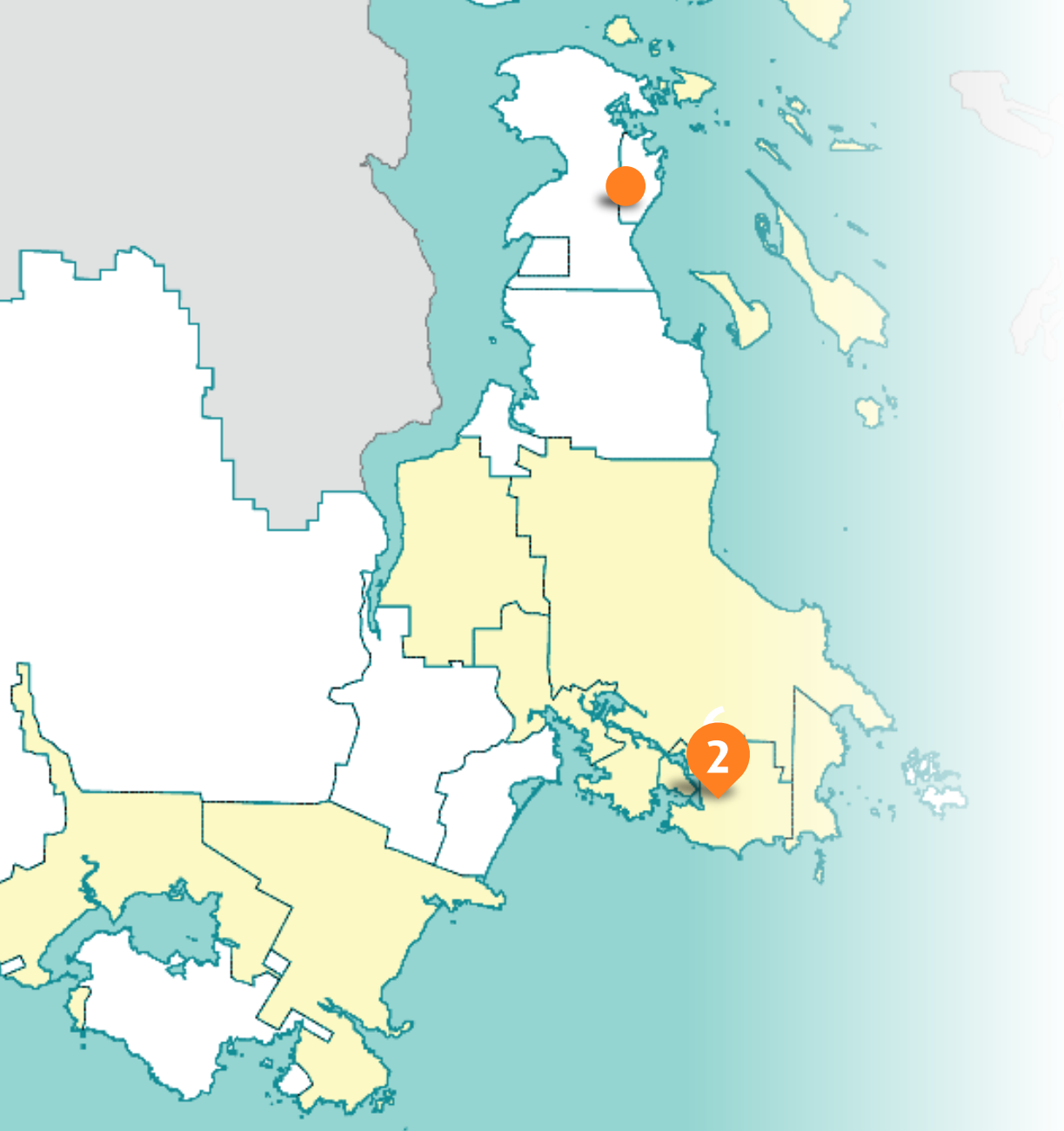
- › Dave Dunnet Community Theatre
- › Sooke Community Theatre
- › Teechamitsa Theatre
- › Alix Gooden Performance Hall
- › Capital Ballroom
- › Ship Point
- › University Farquhar Auditorium
- › Wicket Hall
- › Charlie White Theatre
- › McPherson Playhouse
- › Royal Theatre



Medium – Large Performing Arts Venues

- ✓ Seats >300
- ✓ Primary purpose is performing arts
- ✓ Professional-level functionality

-
- › Alix Goolden Performance Hall
 - › Capital Ballroom
 - › Ship Point
 - › University Farquhar Auditorium
 - › Wicket Hall
 - › Charlie White Theatre
 - › McPherson Playhouse
 - › Royal Theatre



Medium – Large Performing Arts Venues

- ✓ Seats >300
 - ✓ Primary purpose is performing arts
 - ✓ Professional-level functionality
 - ✓ Designed to support wide-range of user groups
-

- › Charlie White Theatre
- › McPherson Playhouse
- › Royal Theatre

Jurisdictional Scan: Regional Theatres

FACILITY	MAIN PUBLIC FUNDER	CAPACITY (SEATS)	OPERATING GRANT*	% OF BUDGET	USAGE RATE
Small Facility	Local Government	<300	-	46%	-
Medium Facility	Local Government	300-700	-	38%	-
Large Facility	Local Government	>700	-	24%	-
Orpheum & QET (4 venues)	City of Vancouver	2780 / 2765 / 668 / 191	\$5.2M (2024)	33%	50-60%
Port Theatre	Regional District / City of Nanaimo	804	\$868k (2022)	39%	50-60%
Cowichan Performing Arts Centre	Cowichan Valley Regional District	731	\$1.6M (2024)	55%	35-45%
Charlie White Theatre	Sidney / North Saanich	310	\$570k (2023)	30%	30-40%
McPherson Playhouse	Capital Regional District	772	\$350k (2024)	17%	25-35%
Royal Theatre	Capital Regional District	1416	\$100k (2024)	3%	35-45%

* Not full contribution – excludes capital

MODEL:

**ROYAL
THEATRE
SERVICE**

(SUB-REGIONAL)



Half Moon Run at the Royal Theatre, courtesy of RMTS



Royal Theatre

This 1416-seat theatre is Vancouver Island's largest performing arts venue.

Annual CRD grant funded by Victoria, Oak Bay & Saanich:

\$480,000	Capital
+ \$100,000	Operating
\$580,000	Per year*

**Budget 2025 could see funding unfrozen*

MODEL:

**ROYAL
THEATRE
SERVICE**

(SUB-REGIONAL)



Case Study

- › 20 sold out shows in May 2023
- › 26,709 attendees
(6% of the CRD population)
- › High technical requirements
- › Only one venue on Vancouver Island had the size and functionality to host this production



MODEL:

**MCPHERSON
PLAYHOUSE
SERVICE**

(SUB-REGIONAL)

Crowd at
McPherson Playhouse, June 2024



McPherson Playhouse

Built as part of the Pantages theatres, this soft-seat venue hosts both professional and community events.

Annual CRD grant funded entirely by Victoria.

\$400,000	Capital
+ \$350,000	Operating
\$750,000	Per year



MODEL:

**MCPHERSON
PLAYHOUSE
SERVICE**

(SUB-REGIONAL)

Wonderheads' production of *A Christmas Carol* at
McPherson Playhouse, December 2022

Case Study

- › Wonderheads Theatre
- › Original productions with local artists: "Wilds", "Loon" and "Christmas Carol"
- › Only McPherson Playhouse has right functionality and size
- › Shows built in CRD and toured across BC to venues like the McPherson



Full Regional Performing Arts Facilities Service

*Region-wide Alternative Approval Process or Referendum requires 2/3rd of the Board vote in favour

PROPOSED SERVICE WOULD:

- › Absorb existing Royal Theatre & McPherson Playhouse services (\$1.3M)
- › Add a contribution service for Charlie White Theatre in Sidney
- › Provide grants for planning and capital fund to support building new facilities
- › Require about \$1.7M in new funds (for a total of \$3M)

PREVIOUS BOARD CONSIDERED APPROVAL THROUGH:

- › Region-wide AAP: less than half of the Board voted in favour (Sept 2021)*
- › Region-wide referendum: costs and timeline considered, then referred to new Board

MODEL:

**FULL
REGIONAL
SERVICE**

Service Functions

PLAN:

- › Planning Grants Program to support feasibility plans, business plans, renovation or expansion plans, or construction plans
- › Maximum request amount = 50% of project expenses
- › Grants administered by CRD to nonprofits or local governments
- › Annual program budget = \$120,000/yr

DEVELOP:

- › Major Capital Access Program to support major capital projects (construction, expansion) and Minor Capital Grants Program (maintenance, accessibility)
- › Staff support for external grants to apply to provincial and federal funds

FUND:

- › Operating grants for: Royal Theatre, McPherson Playhouse, Charlie White Theatre, Future large facilities

MODEL:

**FULL
REGIONAL
SERVICE**



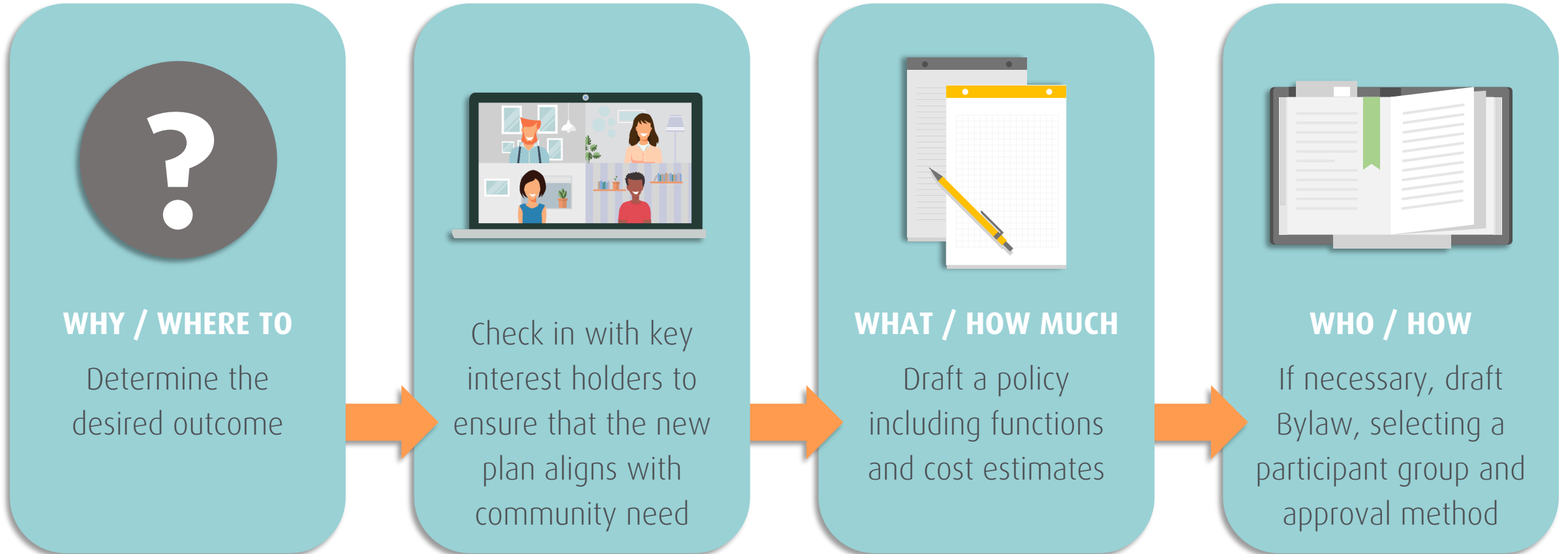
**MODEL:
FULL
REGIONAL
SERVICE**

COST ESTIMATE BY JURISDICTION

JURISDICTION	2024 ACTUAL CRD REQUISITION	2024 COST PER HOUSEHOLD	NEW SERVICE ESTIMATED CRD REQUISITION	NEW SERVICE COST PER HOUSEHOLD	COST SHARING %
Central Saanich			133,665	16.07	4.45%
Colwood			134,110	16.35	3.91%
Esquimalt			116,794	17.93	3.26%
Highlands			18,871	18.30	0.63%
Langford			337,969	14.70	10.35%
Metchosin			34,406	19.94	1.08%
North Saanich	185,000*	--	112,013	19.24	4.40%
Oak Bay	52,804	7.77	158,303	23.28	5.98%
Saanich	278,826	6.06	833,902	18.12	25.72%
Sidney	385,364*	--	99,640	12.00	3.64%
Sooke			99,387	13.71	2.76%
Victoria	998,370	21.20	702,371	14.92	23.77%
View Royal			81,529	17.22	2.40%
Juan De Fuca			46,509	11.46	1.75%
Salt Spring Island			91,532	13.80	3.29%
S. Gulf Islands			58,998	8.59	2.61%
CRD Total	1,330,000		3,060,000		100.00%

*Municipal grants to Mary Winspear Centre (Charlie White Theatre) in 2023, not CRD funding

“Scaling Up”: The Policy Process



Build on Strengths: Do More of What's Working

STRENGTHS

- › Strong and growing demand for arts experiences
- › Vibrant regional arts sector with experienced and diverse performing arts groups
- › High quality presentation at performing arts facilities due to design, functionality, and high-quality theatre management professionals
- › Arts & Culture earned a "B" (the highest grade awarded this year) in Vital Signs Survey

HOW TO "SCALE UP"

- › Support existing and future performing arts facilities
- › Understand arts ecosystem approach of arts spaces (sizes, types & functions) where no single facility meets all needs
- › Focus on regional district role of supporting professional-capable, multidisciplinary facilities with regional impact

Next Steps: Why & Where To

IDENTIFIED ISSUES & OPPORTUNITIES

- › Different areas within the region have different needs
- › Usage rates at Royal and McPherson could be higher
- › Facilities are not affordable to local arts groups
- › Need to activate more community-led venue projects including on Westshore

POLICY OBJECTIVES

- › Focus on options that scale up support for existing venues with regional impact
- › Increase usage rate at major performing arts facilities
- › Increase access for local arts groups to facilities
- › Support venue planning by community groups (studies, consultation, etc.)



Amanda Marshal at the Royal Theatre, July 2023

Thank you

CONTACT US:

Chris Gilpin
Manager, Arts & Culture
cgilpin@crd.bc.ca | 250.360.3205



@crdartsculture



CRD Arts and Culture



crd.bc.ca/arts

Appendix B: Updated list of performing arts facilities in the capital region

	A	B	D	I	K
1	Venue Owner/ Operator	Venue Name	Jurisdiction	Category	Capacity
2	Ambrosia Banquet & Events	Ambrosia Banquet & Events	Victoria	auditorium	C. 151 - 300
3	Arts on View Society	Hermann's Jazz Club	Victoria	nightclub	C. 151 - 300
4	Belfry Theatre Society, The	BMO Studio Theatre	Victoria	theatre: black-box	B. 51 - 150
5	Belfry Theatre Society, The	The Stewart Theatre (Mainstage)	Victoria	theatre: soft-seat	C. 151 - 300
6	Burnside Gorge Community Association	Burnside Gorge Community Centre: Activity Centre	Victoria	auditorium	B. 51 - 150
7	Camosun College: Interurban	grounds: Interurban Campus	Oak Bay	arena/ outdoor	C. 151 - 300
8	Camosun College: Lansdowne	Na'tsa'maht - The Gathering Place	Oak Bay	theatre: black-box	B. 51 - 150
9	Camosun College: Lansdowne	Gibson Auditorium	Oak Bay	theatre: soft-seat	C. 151 - 300
10	Camosun College: Lansdowne	grounds: Lansdowne Campus	Oak Bay	arena/ outdoor	C. 151 - 300
11	Canadian Heritage Arts Society	Canadian College of Performing Arts Performance Hall	Oak Bay	theatre: soft-seat	B. 51 - 150
12	Central Saanich Senior Citizens Association	The Centre for Active Living: Lower Hall	Central Saanich	banquet hall	B. 51 - 150
13	Central Saanich Senior Citizens Association	The Centre for Active Living: Upper Hall	Central Saanich	banquet hall	B. 51 - 150
14	CFB Esquimalt	Chief and Petty Officers Mess: Rainbow Room	Esquimalt	banquet hall	C. 151 - 300
15	CFB Esquimalt: Can Forces Morale & Welfare Svcs	Colwood Pacific Activity Centre: MCDV Multipurpose Auditorium	Colwood	auditorium	D. 301 - 500
16	City of Victoria	Cameron Bandshell in Beacon Hill Park	Victoria	arena/ outdoor	C. 151 - 300
17	City of Victoria	Hermann's Upstairs Lounge	Victoria	nightclub	C. 151 - 300
18	City of Victoria	Centennial Square	Victoria	arena/ outdoor	E. 501 - 1000
19	City of Victoria	Royal Athletic Park	Victoria	arena/ outdoor	G. > 2000
20	City of Victoria	Ship Point	Victoria	arena/ outdoor	F. 1001 - 2000
21	Cook Street Village Activity Centre	Cook Street Village Activity Centre	Victoria	auditorium	B. 51 - 150
22	Da Vinci Centre	Da Vinci Centre	Victoria	banquet hall	D. 301 - 500
23	District of Highlands	Caleb Pike House (home of Highlands Music Coffee House)	Highlands	banquet hall	A. < 50

	A	B	D	I	K
1	Venue Owner/ Operator	Venue Name	Jurisdiction	Category	Capacity
24	District of Highlands	Caleb Pike Heritage Park grounds (canopy available)	Highlands	arena/ outdoor	B. 51 - 150
25	District of Oak Bay	Windsor Park Pavilion: Rotary Hall	Oak Bay	banquet hall	A. < 50
26	District of Oak Bay	Oak Bay Rec Centre: Sports View Lounge	Oak Bay	banquet hall	B. 51 - 150
27	District of Oak Bay	Henderson Rec Centre: Gymnasium	Oak Bay	gymnasium	D. 301 - 500
28	District of Saanich	Gordon Head Rec Centre: Mt. Doug Auditorium	Saanich	auditorium	B. 51 - 150
29	District of Saanich	G.R. Pearkes Rec Centre: Arena	Saanich	arena/ outdoor	G. > 2000
30	District of Saanich	Cedar Hill Rec Centre: Gymnasium	Saanich	gymnasium	B. 51 - 150
31	Fairfield Gonzales Community Association	Garry Oak Room	Oak Bay	banquet hall	B. 51 - 150
32	Fernwood Community Association	Paul Phillips Hall	Victoria	theatre: black-box	B. 51 - 150
33	Fernwood Hub (Melissa Smith)	Fernwood Hub	Victoria	banquet hall	B. 51 - 150
34	First Church of Christ, Scientist, Victoria	Sanctuary with stage	Victoria	church	D. 301 - 500
35	First Unitarian Church of Victoria	Lion Hall	Saanich	banquet hall	B. 51 - 150
36	First Unitarian Church of Victoria	Sanctuary	Saanich	church	C. 151 - 300
37	Four Points by Sheraton Victoria Gateway	West Shore Ballroom	Langford	banquet hall	D. 301 - 500
38	Galiano Club, The	Galiano Community Hall	SGI EA	banquet hall	B. 51 - 150
39	German Canadian Cultural Society, The	Victoria Edelweiss Club: Banquet Room	Victoria	banquet hall	C. 151 - 300
40	Gordon United Church	Christian Education Hall	Langford	banquet hall	B. 51 - 150
41	Gordon United Church	Sanctuary	Langford	church	B. 51 - 150
42	Intrepid Theatre	Intrepid Theatre Club	Victoria	theatre: black-box	A. < 50
43	Intrepid Theatre	Intrepid Theatre Metro Studio	Victoria	theatre: black-box	C. 151 - 300
44	Island Arts Centre Society	ArtSpring Theatre	SSI EA	theatre: soft-seat	C. 151 - 300
45	Lambrick Park Church	Auditorium	Victoria	auditorium	D. 301 - 500

	A	B	D	I	K
1	Venue Owner/ Operator	Venue Name	Jurisdiction	Category	Capacity
46	Langham Court Theatre Society	Langham Court Theatre	Victoria	theatre: soft-seat	C. 151 - 300
47	Mary Winspear Centre	Charlie White Theatre	Sidney	theatre: soft-seat	D. 301 - 500
48	Mary Winspear Centre	Bodine Family Hall	Sidney	banquet hall	E. 501 - 1000
49	Metchosin Hall Society	Metchosin Community Hall	Metchosin	banquet hall	C. 151 - 300
50	MRG Group	Capital Ballroom	Victoria	nightclub	E. 501 - 1000
51	Norway House	Sons of Norway Hall	Victoria	banquet hall	B. 51 - 150
52	Oak Bay Beach Hotel	David Foster Foundation Theatre	Oak Bay	banquet hall	B. 51 - 150
53	Oak Bay United Church	Oak Bay United Church	Oak Bay	church	C. 151 - 300
54	Other Guise Theatre Company, The	716 Johnson Street (under renovation)	Victoria	theatre: black-box	B. 51 - 150
55	Pacific Opera Victoria	The Baumann Centre: Wingate Studio	Victoria	recital hall	B. 51 - 150
56	Rebel Company	Rebel Garage (coffee bar)	Saanich	auditorium	A. < 50
57	Roxy Theatre	Roxy Theatre (Blue Bridge Repertory Theatre)	Victoria	theatre: soft-seat	C. 151 - 300
58	Royal & McPherson Theatres Society	McPherson Playhouse	Victoria	theatre: soft-seat	E. 501 - 1000
59	Royal & McPherson Theatres Society	Royal Theatre	Victoria	theatre: soft-seat	F. 1001 - 2000
60	Royal Canadian Legion #172: Esquimalt	Hall	Esquimalt	banquet hall	D. 301 - 500
61	Royal Canadian Legion #292: Victoria	David Slater Auditorium	Victoria	banquet hall	B. 51 - 150
62	Royal Canadian Legion #91: Langford	Hall	Langford	banquet hall	C. 151 - 300
63	Salt Spring Arts (Community Arts Council)	Mahon Memorial Hall	SSI EA	banquet hall	C. 151 - 300
64	Save-On Foods Memorial Centre	Save-On Foods Memorial Centre	Victoria	arena/ outdoor	G. > 2000
65	SD 61 Greater Victoria: Esquimalt	Esquimalt High School Theatre	Esquimalt	theatre: soft-seat	C. 151 - 300
66	SD 61 Greater Victoria: Oak Bay	Dave Dunnet Community Theatre	Oak Bay	theatre: soft-seat	D. 301 - 500
67	SD 61 Greater Victoria: Reynolds	Reynolds High School Theatre	Saanich	theatre: soft-seat	C. 151 - 300

	A	B	D	I	K
1	Venue Owner/ Operator	Venue Name	Jurisdiction	Category	Capacity
68	SD 61 Greater Victoria: Spectrum	Spectrum Community School Theatre	Saanich	theatre: soft-seat	C. 151 - 300
69	SD 61 Greater Victoria: Victoria	Vic High Theatre	Victoria	theatre: soft-seat	C. 151 - 300
70	SD 61 Sooke: Belmont	Belmont Theatre	Langford	theatre: soft-seat	C. 151 - 300
71	SD 61 Sooke: Edward Milne Community	Gymnasiums	Sooke	gymnasium	B. 51 - 150
72	SD 61 Sooke: Edward Milne Community	Sooke Community Theatre	Sooke	theatre: soft-seat	D. 301 - 500
73	SD 62 Sooke: Royal Bay	Teechamitsa Theatre	Colwood	theatre: soft-seat	D. 301 - 500
74	SD 62 Sooke: Spencer	Isabelle Reader Theatre	Langford	theatre: soft-seat	D. 301 - 500
75	SD 63 Saanich: Claremont	Ridge Playhouse	Saanich	theatre: soft-seat	C. 151 - 300
76	SD 63 Saanich: Parkland	Parkland Theatre	Saanich	theatre: soft-seat	C. 151 - 300
77	Sooke Community Association	Sooke Community Hall	Sooke	banquet hall	D. 301 - 500
78	St. Ann's Academy National Historic Site	Auditorium	Victoria	theatre: soft-seat	C. 151 - 300
79	St. Ann's Academy National Historic Site	Academy Green & Orchard	Victoria	arena/ outdoor	D. 301 - 500
80	St. Luke's Cedar Hill Anglican Church	Parish Hall (auditorium with stage)	Saanich	auditorium	C. 151 - 300
81	Strathcona Hotel	Wicket Hall	Victoria	nightclub	E. 501 - 1000
82	The Victoria Curling Club	The Victoria Curling Club	Victoria	banquet hall	F. 1001 - 2000
83	Theatre SKAM	Satellite Studio	Victoria	auditorium	A. < 50
84	Townline Property Management	Victoria Public Market at the Hudson	Victoria	banquet hall	C. 151 - 300
85	Ukranian-Canadian Cultural Society of V.I.	Ukranian Canadian Cultural Centre Hall	Saanich	banquet hall	B. 51 - 150
86	University of Victoria	Philip T. Young Recital Hall	Oak Bay	recital hall	C. 151 - 300
87	University of Victoria	David Lam Auditorium	Oak Bay	auditorium	D. 301 - 500
88	University of Victoria	University Farquhar Auditorium	Saanich	theatre: soft-seat	F. 1001 - 2000
89	University of Victoria: Phoenix Theatre	Barbara McIntyre Studio (*summer only)	Oak Bay	theatre: black-box	B. 51 - 150

	A	B	D	I	K
1	Venue Owner/ Operator	Venue Name	Jurisdiction	Category	Capacity
90	University of Victoria: Phoenix Theatre	Chief Dan George Theatre (*summer only)	Oak Bay	theatre: soft-seat	C. 151 - 300
91	University of Victoria: Phoenix Theatre	Roger Bishop Theatre (Mainstage)*summer only	Oak Bay	theatre: soft-seat	C. 151 - 300
92	Upstairs Entertainment	Upstairs Entertainment	Victoria	nightclub	C. 151 - 300
93	Victoria Conference Centre	Crystal Garden	Victoria	banquet hall	F. 1001 - 2000
94	Victoria Conservatory of Music	Robin & Winifred Wood Recital Hall	Victoria	recital hall	B. 51 - 150
95	Victoria Conservatory of Music	Alix Goolden Performance Hall	Victoria	theatre: soft-seat	E. 501 - 1000
96	Victoria Multicultural Society, The	Victoria Event Centre	Victoria	nightclub	C. 151 - 300
97	West Shore Parks & Recreation Society	Kinsmen Fieldhouse	Colwood	banquet hall	B. 51 - 150
98	West Shore Parks & Recreation Society	Juan de Fuca Arena (April to June is dry floor)	Colwood	arena/ outdoor	E. 501 - 1000
99	West Shore Parks & Recreation Society	Q Centre Arena (May to Sept is dry floor)	Colwood	arena/ outdoor	G. > 2000
100	Wheelies Motorcycles	Parking Lot	Victoria	arena/ outdoor	A. < 50
101	White Eagle Polish Association	White Eagle Polish Hall	Victoria	banquet hall	C. 151 - 300
102	Yellowhouse Art Centre Society	Outdoor Ampitheatre	SGI EA	arena/ outdoor	C. 151 - 300
103					
104					
105					
106					
107					
108					
109					
110					
111					

Appendix C: Updated cost estimates by jurisdiction for the 2021 model of a full regional performing arts facilities service

Municipalities	2024 Current Participation for Royal and McPherson Theatre Services			Estimated Requisition and Cost Sharing Simulation for New Performing Arts Facilities Service			Change in Cost
	2024 Actual Theatre Services Requisition	2024 Average Cost Per Household	2024 Cost Sharing %	Estimated New Service Requisition	Average Cost Per Household	Cost Sharing %	
Central Saanich				133,665	16.07	4.45%	133,665
Colwood				134,110	16.35	3.91%	134,110
Esquimalt				116,794	17.93	3.26%	116,794
Highlands				18,871	18.30	0.63%	18,871
Langford				337,969	14.70	10.35%	337,969
Metchosin				34,406	19.94	1.08%	34,406
North Saanich				112,013	19.24	4.40%	112,013
Oak Bay	52,804	7.77	3.97%	158,303	23.28	5.98%	105,499
Saanich	278,826	6.06	20.96%	833,902	18.12	25.72%	555,076
Sidney				99,640	12.00	3.64%	99,640
Sooke				99,387	13.71	2.76%	99,387
Victoria	998,370	21.20	75.07%	702,371	14.92	23.77%	(295,999)
View Royal				81,529	17.22	2.40%	81,529
Juan De Fuca				46,509	11.46	1.75%	46,509
Salt Spring Island				91,532	13.80	3.29%	91,532
Southern Gulf Island				58,998	8.59	2.61%	58,998
Total Group 1	1,330,000		100.00%	3,060,000		100.00%	1,730,000