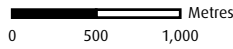


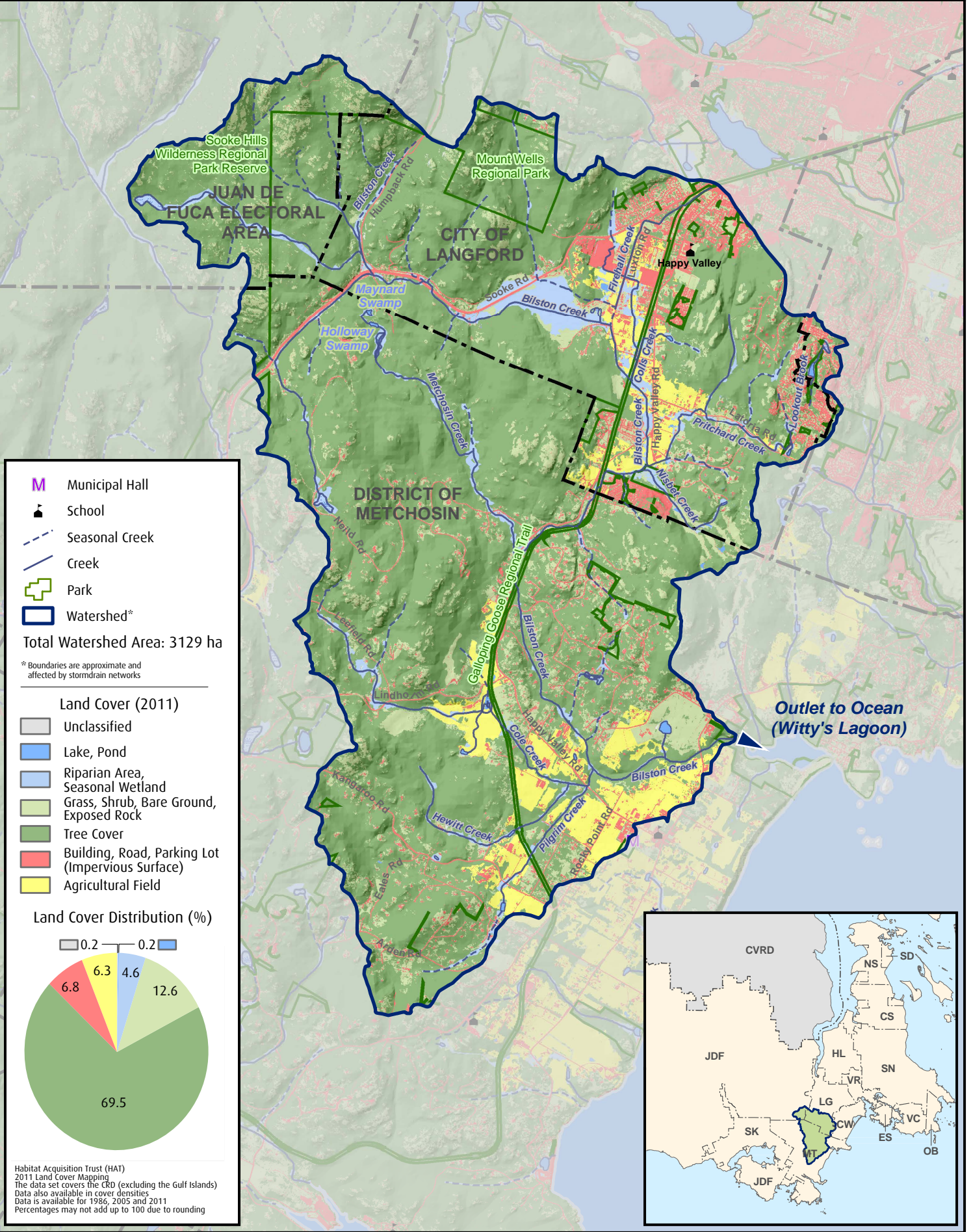
# Bilston Creek Watershed (2011)



Projection: UTM Zone 10 North, NAD 1983



**DISCLAIMER**  
**Important** This map is for general information purposes only. The Capital Regional District (CRD) makes no representations or warranties regarding the accuracy or completeness of this map or the suitability of the map for any purpose. **This map is not for navigation.** The CRD will not be liable for any damage, loss or injury resulting from the use of the map or information on the map and the map may be changed by the CRD at any time.



- M Municipal Hall
- School
- Seasonal Creek
- Creek
- Park
- Watershed\*

**Total Watershed Area: 3129 ha**

\*Boundaries are approximate and affected by stormdrain networks

---

**Land Cover (2011)**

- Unclassified
- Lake, Pond
- Riparian Area, Seasonal Wetland
- Grass, Shrub, Bare Ground, Exposed Rock
- Tree Cover
- Building, Road, Parking Lot (Impervious Surface)
- Agricultural Field

**Land Cover Distribution (%)**

Land Cover Type	Percentage (%)
Tree Cover	69.5
Grass, Shrub, Bare Ground, Exposed Rock	12.6
Agricultural Field	6.8
Building, Road, Parking Lot (Impervious Surface)	6.3
Riparian Area, Seasonal Wetland	4.6
Lake, Pond	0.2
Unclassified	0.2

Habitat Acquisition Trust (HAT)  
 2011 Land Cover Mapping  
 The data set covers the CRD (excluding the Gulf Islands)  
 Data is available for 1986, 2005 and 2011  
 Percentages may not add up to 100 due to rounding

