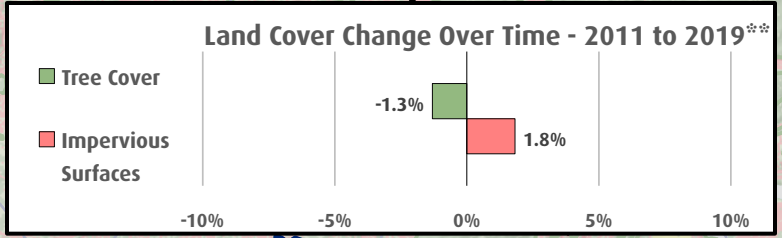
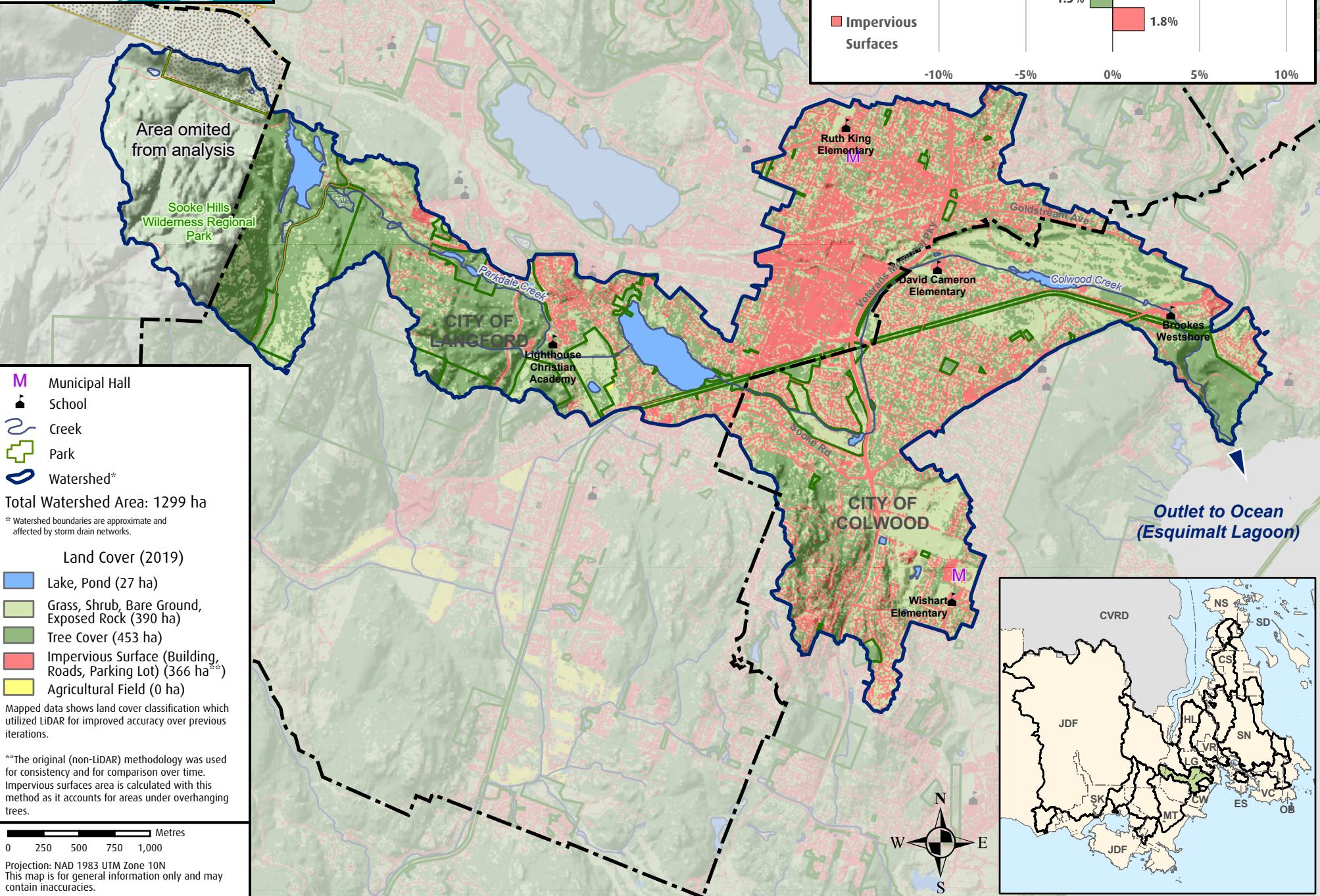


Colwood Creek Watershed



Area omitted from analysis

Sooke Hills Wilderness Regional Park

CITY OF LANGFORD

Ruth King Elementary

David Cameron Elementary

Brookes Westshore

CITY OF COLWOOD

Wishart Elementary

Outlet to Ocean (Esquimalt Lagoon)

- M Municipal Hall
- ▲ School
- ~ Creek
- + Park
- Watershed*

Total Watershed Area: 1299 ha

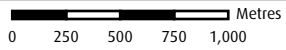
* Watershed boundaries are approximate and affected by storm drain networks.

Land Cover (2019)

- Lake, Pond (27 ha)
- Grass, Shrub, Bare Ground, Exposed Rock (390 ha)
- Tree Cover (453 ha)
- Impervious Surface (Building, Roads, Parking Lot) (366 ha^{**})
- Agricultural Field (0 ha)

Mapped data shows land cover classification which utilized LiDAR for improved accuracy over previous iterations.

**The original (non-LiDAR) methodology was used for consistency and for comparison over time. Impervious surfaces area is calculated with this method as it accounts for areas under overhanging trees.



Projection: NAD 1983 UTM Zone 10N
This map is for general information only and may contain inaccuracies.

