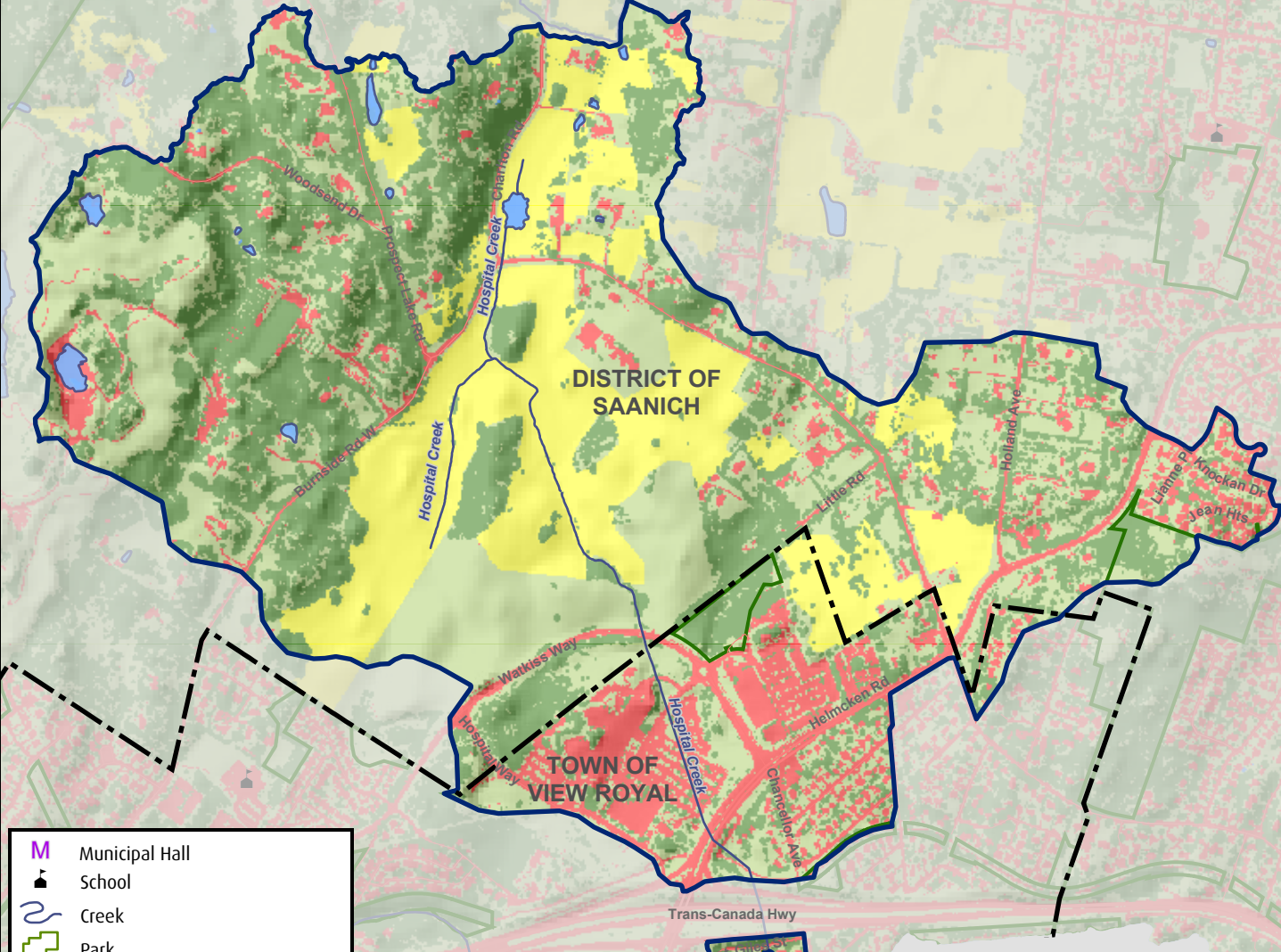
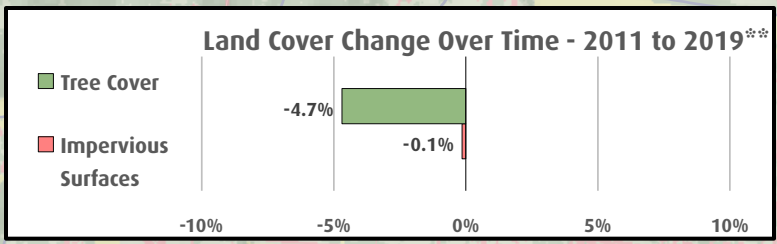


# Hospital Creek Watershed



- Municipal Hall
- School
- Creek
- Park
- Watershed\*

**Total Watershed Area: 221 ha**

\* Watershed boundaries are approximate and affected by storm drain networks.

**Land Cover (2019)**

- Lake, Pond (1 ha)
- Grass, Shrub, Bare Ground, Exposed Rock (75 ha)
- Tree Cover (74 ha)
- Impervious Surface (Building, Roads, Parking Lot) (41 ha\*\*\*)
- Agricultural Field (42 ha)

Mapped data shows land cover classification which utilized LiDAR for improved accuracy over previous iterations.

\*\*\*The original (non-LiDAR) methodology was used for consistency and for comparison over time. Impervious surfaces area is calculated with this method as it accounts for areas under overhanging trees.

0 100 200 300 400 Metres

Projection: NAD 1983 UTM Zone 10N  
This map is for general information only and may contain inaccuracies.

Outlet to Ocean  
(Portage Inlet)

