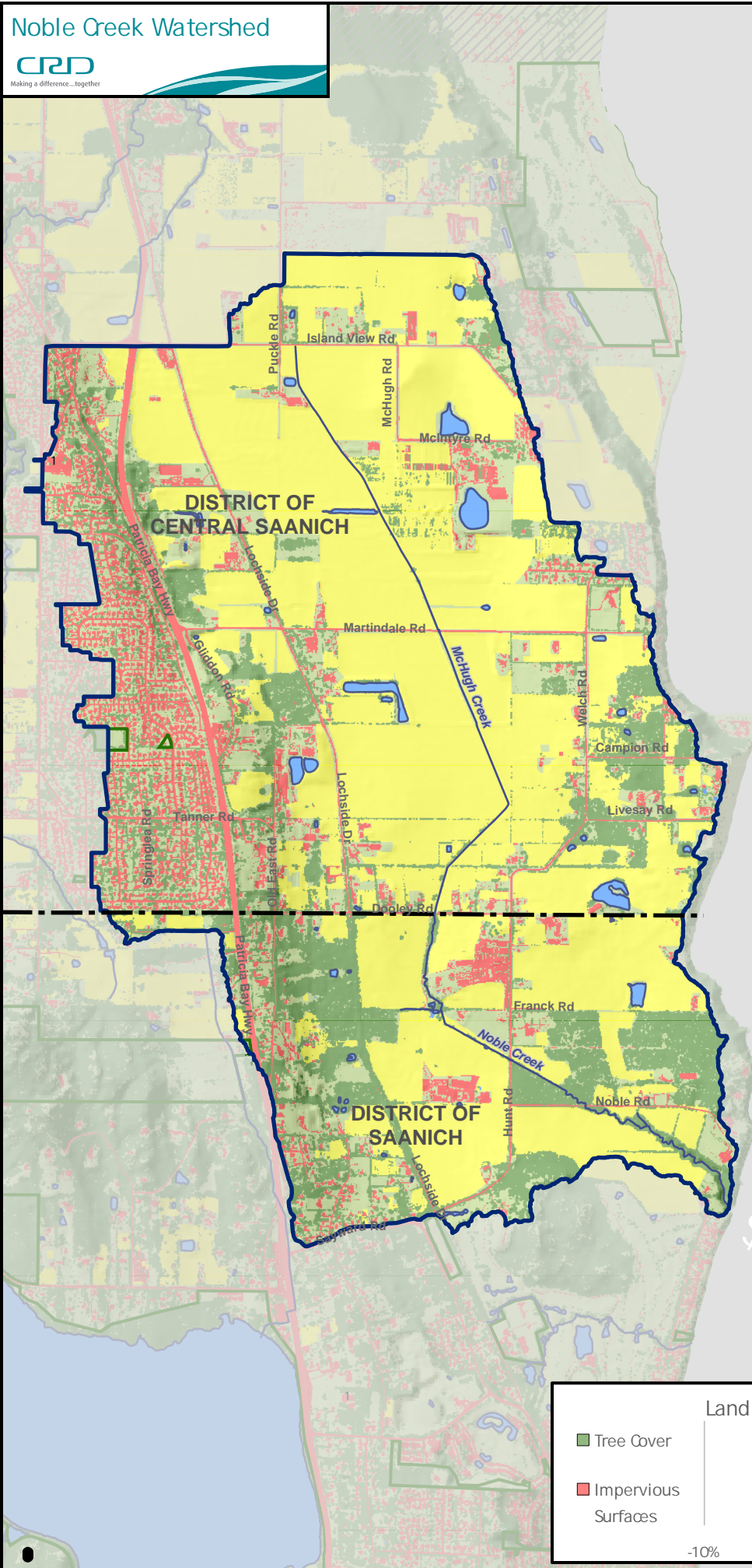


Noble Creek Watershed



- M Municipal Hall
- 1 School
- Creek
- Park
- Watershed*

Total Watershed Area: 821 ha

* Watershed boundaries are approximate and affected by storm drain networks.

Land Cover (2019)

- Lake, Pond (7 ha)
- Grass, Shrub, Bare Ground, Exposed Rock (155 ha)
- Tree Cover (166 ha)
- Impervious Surface (Building, Roads, Parking Lot) (105 ha**)
- Agricultural Field (412 ha)

Mapped data shows land cover classification which utilized LIDAR for improved accuracy over previous iterations.

**The original (non-LIDAR) methodology was used for consistency and for comparison over time. Impervious surfaces area is calculated with this method as it accounts for areas under overhanging trees.

0 200 400 600 800 Meters

Projection: NAD 1983 UTM Zone 10N
This map is for general information only and may contain inaccuracies.

Outlet to Ocean (Haro Strait)

