

# Reay Creek Watershed



- Municipal Hall
- School
- Creek
- Park
- Watershed\*

Total Watershed Area: 343 ha

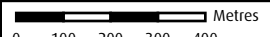
\* Watershed boundaries are approximate and affected by storm drain networks.

### Land Cover (2019)

- Lake, Pond (0 ha)
- Grass, Shrub, Bare Ground, Exposed Rock (81 ha)
- Tree Cover (66 ha)
- Impervious Surface (Building, Roads, Parking Lot) (119 ha)\*\*
- Agricultural Field (91 ha)

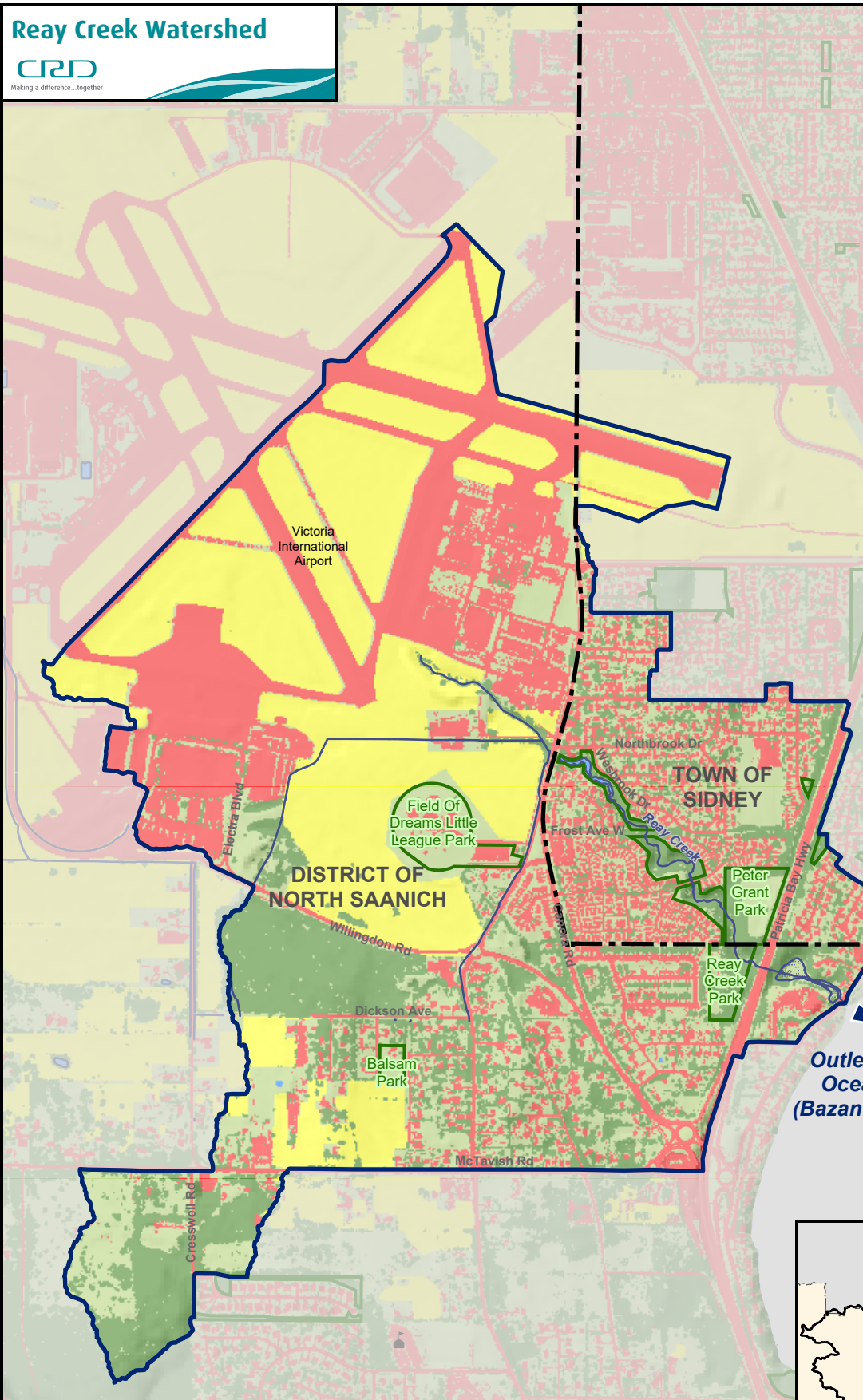
Mapped data shows land cover classification which utilized LiDAR for improved accuracy over previous iterations.

\*\*The original (non-LiDAR) methodology was used for consistency and for comparison over time. Impervious surfaces area is calculated with this method as it accounts for areas under overhanging trees.



Projection: NAD 1983 UTM Zone 10N

This map is for general information only and may contain inaccuracies.



Outlet to Ocean (Bazan Bay)

