

Tod Creek Watershed



- M Municipal Hall
- School
- Creek
- Park
- Watershed*

Total Watershed Area: 2231 ha

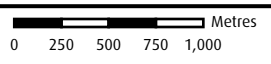
* Watershed boundaries are approximate and affected by storm drain networks.

Land Cover (2019)

- Lake, Pond (100 ha)
- Grass, Shrub, Bare Ground, Exposed Rock (428 ha)
- Tree Cover (1535 ha)
- Impervious Surface (Building, Roads, Parking Lot) (137 ha**)
- Agricultural Field (82 ha)

Mapped data shows land cover classification which utilized LiDAR for improved accuracy over previous iterations.

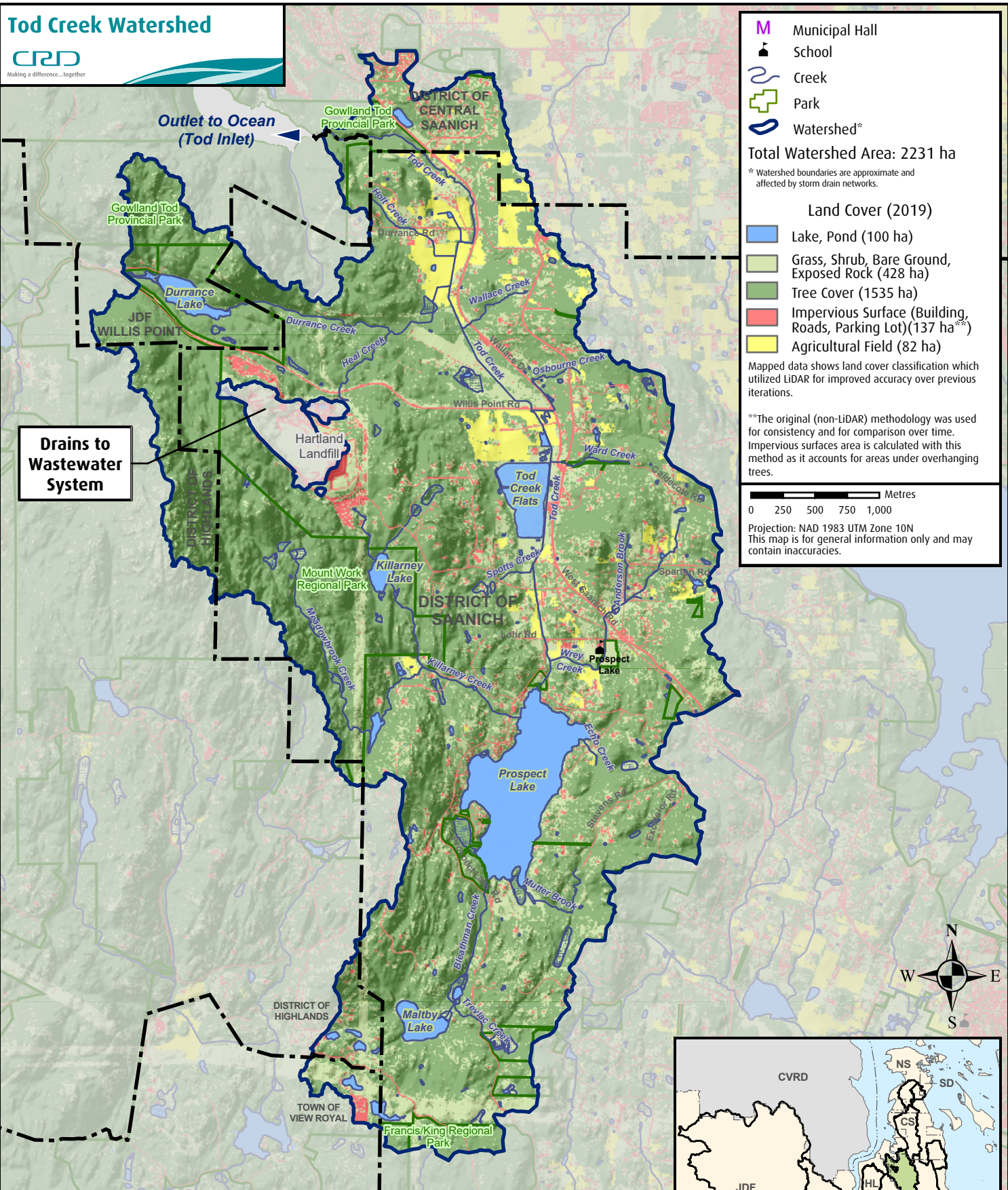
**The original (non-LiDAR) methodology was used for consistency and for comparison over time. Impervious surfaces area is calculated with this method as it accounts for areas under overhanging trees.



Projection: NAD 1983 UTM Zone 10N
This map is for general information only and may contain inaccuracies.

Drains to Wastewater System

Outlet to Ocean (Tod Inlet)



Land Cover Change Over Time - 2011 to 2019**

